

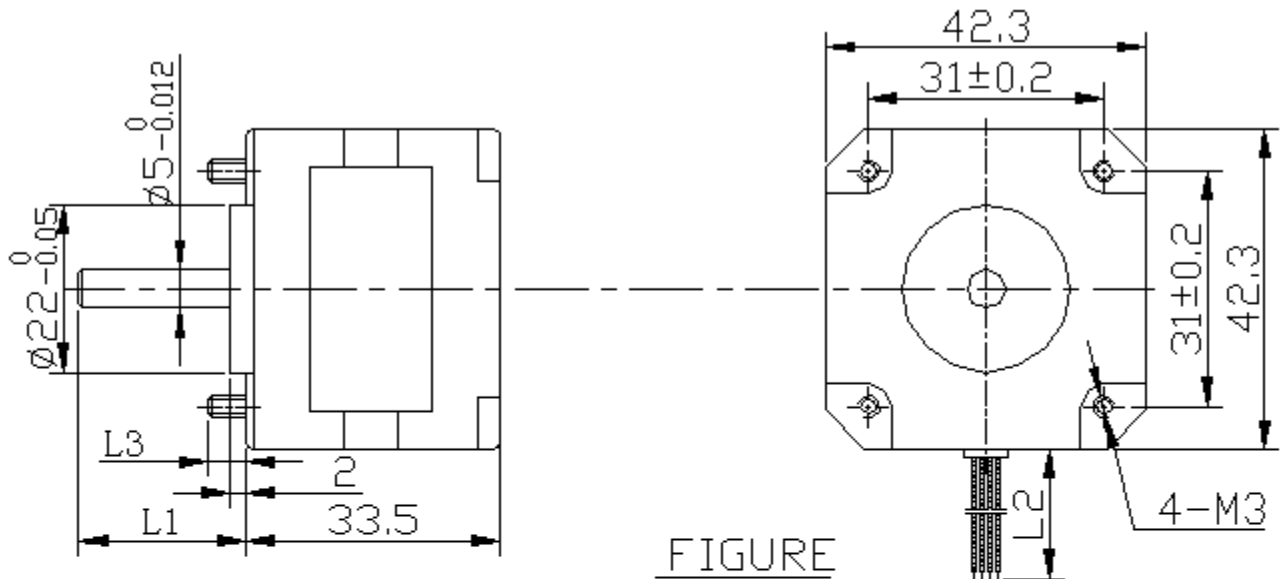
42BYG STEPPING MOTOR

1. INFORMATION AND APPLICATION

42BYG stepping motor is used in household appliances, medical equipment, stage lighting devices, the control system of industrial automation and some driving devices.



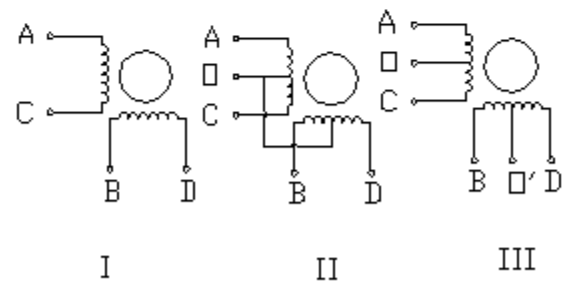
2. FIGURE AND WIRING DIAGRAM



FIGURE

Step Angle	0.9/1.8 Dec.
Insulation Resistance	500V DC 100M Ω Min
End Play	0.1-0.3
Radial Play	0.02mm Max
Temperature Rise	75K Max
Dielectric Strength	(500V-950V) 50Hz 1Min
Ambient Temperature	-22~+55 $^{\circ}$ C

SPECIFICATIONS



WIRING DIAGRAM

3. SPECIFICATIONS

Model	Phase	Voltage (V)	Current (A)	Resistance (Ω)	inductance (mH)	Holding Torque (g.cm)	Detent Torque (g.cm)	Weight (kg)	L1 (mm)	L2 (mm)	L3 (mm)	Wiring Diagram
42BYG006	2	12	0.8	15	19	1600	<200	0.2	20	50	0	I
42BYG008G	2	32	0.32	13.7	22.2	900	<150	0.2	16.3	110	0	I
42BYG009	2	22	0.6	7	6	1400	<180	0.2	16	130	5.5	I
42BYG012	2	24	0.52	9	11	1700	<220	0.2	24	400	0	I
42BYG008	4	32	0.38	17	13.7	800	<150	0.2	16.3	110	0	II
42BYG016	4	12	0.16	75	55	950	<200	0.2	17	400	5.5	II
42BYG020	4	12	0.6	20	14	1700	<200	0.2	16	400	5.5	II
42BYG030	4	24	0.6	6.3	5	1200	<200	0.2	18	600	0	II
42BYG014	4	8.4	0.45	19	13	1350	<200	0.2	24	200	0	III
42BYG015	4	12	0.3	40	19	1250	<200	0.2	16	500	1	III
42BYG026	4	9.6	0.4	24	13	1100	<200	0.2	24	180	0	III
42BYG205	4	9.6	0.48	20	15	1300	<200	0.24	24	400	0	III
